

### Structural & Design Features:

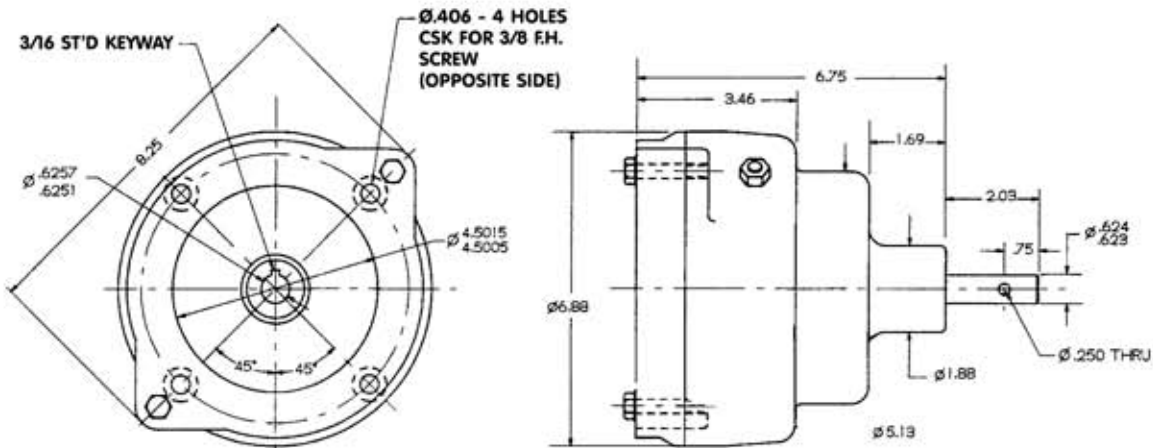
- Parallel Shaft Two-Stage Spur Gear Reducer
- Induction Hardened Teeth on all Gears and Pinions
- Annealed Aluminum Housing, Precision Machined for Accurate Shaft Alignment
- Pinions Cut Integral with Shafts
- Ball Bearings on Output Shaft
- Adaptor for Face-Mounting NEMA 56C Motor  
(with 5/8" Diameter Shaft, 3/16" Keyway)

### Output Options:

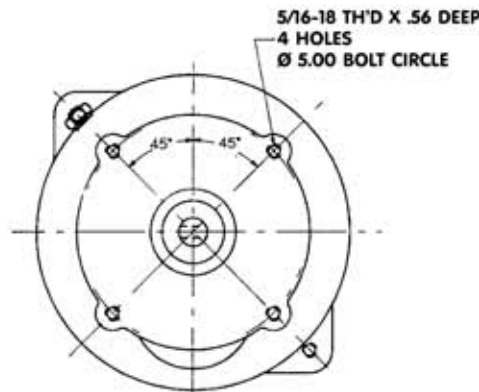
- Available with 1 Gear Ratio  
(See Chart Below)



### Dimensions and Ratings



Rear View (Input end)  
Mounting Dimensions for NEMA 56C Motor



Front View (Output end)

Ratio	2.06:1
Output Speed, RPM	837.4
Input Hp.	2.12
Max Output Torque, In.-lbs.	156

All data is for an Operating Service Factor of 1 at 1725 RPM input speed



**Toledo Gearmotor**