

Structural & Design Features:

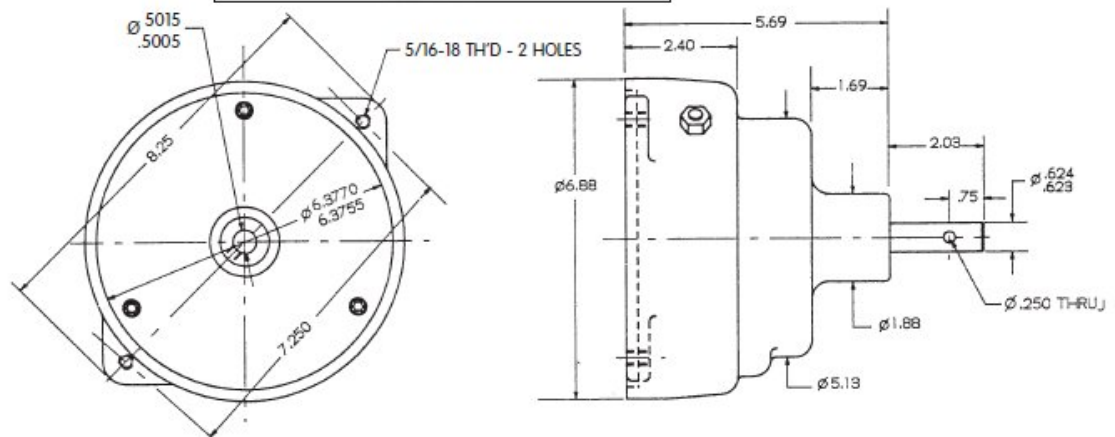
- Parallel Shaft Two-Stage Spur Gear Reducer
- Induction Hardened Teeth on all Gears and Pinions
- Annealed Aluminum Housing, Precision Machined for Accurate Shaft Alignment
- Pinions Cut Integral with Shafts
- Ball Bearings on Output Shaft
- Flanged and Bored for Mounting NEMA 48N Motor (Oil Burner Type)

Output Options:

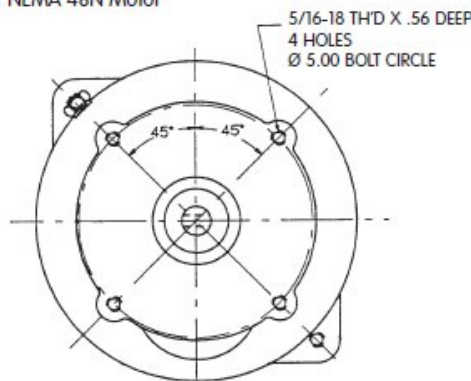
- Available with 1 Gear Ratio (See Chart Below)



Dimensions and Ratings



Rear View (Input end)
Mounting Dimensions for NEMA 48N Motor



Front View (Output end)

Ratio	10:1
Output Speed, RPM	172.5
Input Hp.	.50
Max Output Torque, In.-lbs.	182

All data is for an Operating Service Factor of 1 at 1725 RPM input speed (consult Mfr. for allowable overhung loads)



Toledo Gearmotor

419/885-3769 • Fax 419/885-3799 • www.toledogear.com