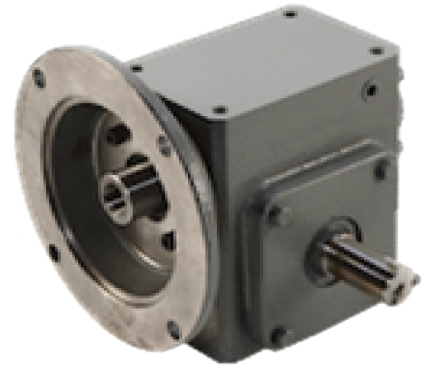


# RIGHT ANGLE GEAR REDUCERS

# T262M-HS

## HS Style Structural & Design Features:

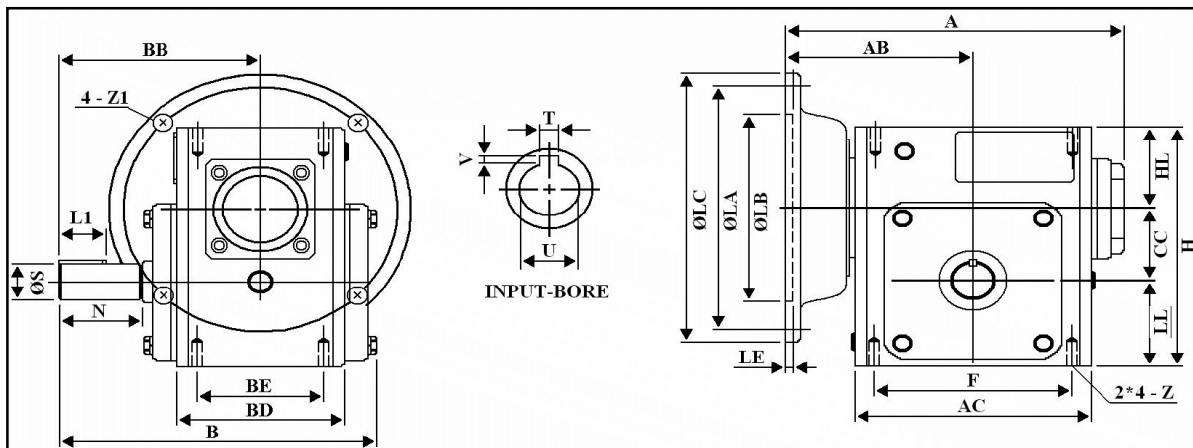
- Bronze Worm Gear
- Hardened and Ground Worm
- Cast Iron Housing, Precision Machined for Accurate Shaft Alignment
- Ball Bearings on Input Shaft
- Tapered Roller Bearings on Output Shaft
- Heat Treated Input and Output Shafts
- Mounting bases available upon request



## Output Options:

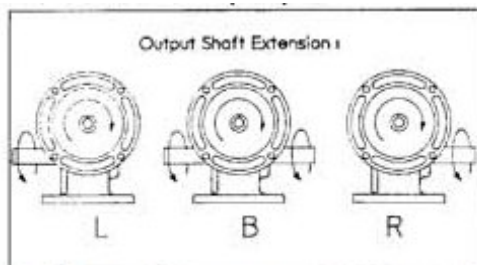
- Available with 3 Shaft Extensions - L, B, R

## Dimensions and Ratings



Size	A	AB	AC	B	BB	BD	BE	CC	F	H	HL	LL	N	Z
262	9.41	5.059	7.165	8.87	5.63	4.69	3.375	2.63	6.38	8	2.44	2.94	2.626	3/8-16 UNC

Size	Input Bore		Output Shaft			Flange					NEMA Frame	OIL (oz.)
	U	T x V	L1	S	W x Y	LA	LB	LC	LE	Z1		
262	0.63	3/16 x 3/32	2	1.125	1/4 x 1/8	5.88	4.5	6.5	0.16	0.43	56C	34.55



To order indicate Model, Output Shaft Extension and Ratio, as shown below

**T262M-HS**   **-L**   **-40**  
 |                      |                      |  
 Model                Output Shaft        Ratio  
                           Extension (L,B,or R)



Toledo Gearmotor

419/885-3769 • Fax 419/885-3799 • [www.toledogear.com](http://www.toledogear.com)